

Housed Bullet

Prevents tramp iron from damaging process machinery. Installed in blown or gravity-fed pipelines, usually at intake points and primary stages of the process line.



Separating Drum

Continuous removal of tramp and finer ferrous contamination from dry bulk materials in grain, chemical and mining processing and recycling. Fitted at conveyor discharge or below vibratory feed system.



Housed Separating Drum

Installed in chutes for continuous removal of tramp and fine ferrous contamination from dry bulk materials in the grain, chemical and mineral industries, and recycling.



ATEX type approval

We are now the only magnetic separator manufacturer to have ATEX type approval. This means we can provide full ATEX certification onsite, significantly shortening turnaround and reducing testing costs to a fraction of those of other manufacturers.



Don't see what you need?
Let us design it for you



Over half the sanitary separators we manufacture are customized or entirely custom-built to exactly match our customers' requirements.

Our experience means that our custom-engineered appliances can be manufactured at costs and turnaround times little different from our standard products.

For further details on custom and standard products, please contact our North American Sales Manager

Mark Ward

mward@eclipsemagnetics.com



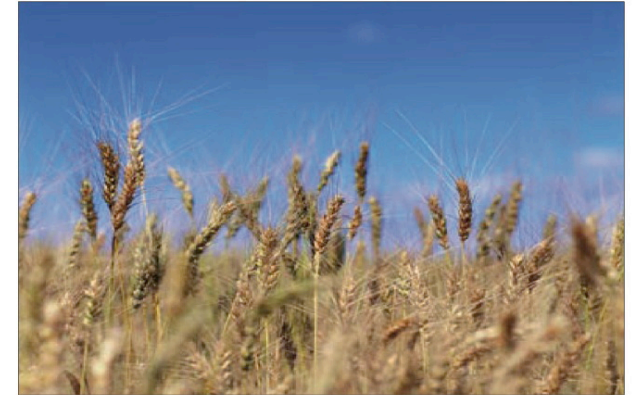
Kelford
INDUSTRIAL SALES

111 Shearson Crescent, Cambridge, ON
Phone: 519-740-8950 Toll Free: 1-800-265-6620
Fax: 519-740-8973

Specialists in hard to find items and single source supply.
[website: www.kelford.biz](http://www.kelford.biz)



SANITARY SEPARATION



Magnetic separators are used in almost every processing industry to remove ferrous and para-magnetic* contamination from products and production lines.

Contamination can enter your production line with your raw materials, as staples and nails from packaging, as nuts and bolts vibrating loose from machinery, as fragments from the wear and tear of moving parts, and as rust.

Not only can this contamination enter your products, it can also cause production line stoppage and serious damage to your machinery.

Eclipse Magnetics produce high quality, high power separators to suit most applications in a vast range of industries, including pharmaceutical and food processing, to protect your product, your customers and your business from the damage that metal contamination can cause.

*Non-magnetic material that can take on some magnetic properties

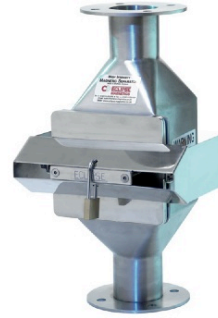
Rod

Extremely efficient at removing fine iron contamination from free flowing products (e.g. sugar, grain, granulates, powders with low moisture content). Ideal for engineers building their own separators or where there isn't enough room for a conventional unit.



Pneumag

High intensity magnetic separator designed to remove ferrous and stainless steel scrapings from pneumatic conveying lines operating at up to 25m/s.



Deep Field Chute

Removes tramp iron from gravity fed pipelines and chutes. Installed at goods inwards points or mid-process. Allows established flow rates to be maintained.



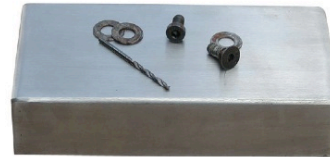
Grids

Extremely efficient removal of fine iron from free flowing powders & granulates. Easily placed into hoppers, intake & outlet points.



Strip

Placed above conveyors, side of chute work, product outlets. Stainless steel shroud means can be used in wet applications.



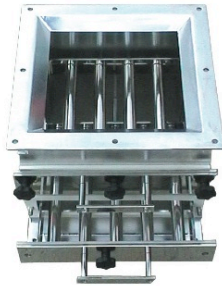
Conveyor Head Roller

Installed at discharge end of flat or trough belt conveyors to remove tramp and small pieces of iron that cannot be extracted by plate or overband magnets because of product depth.



Double Row Easy Clean Grid

Increased efficiency, longer operating period than single row. Removes ferrous & para-magnetic contamination from dry free flowing products (sugar, grain flour, powders). Units available for chutes and pipelines.



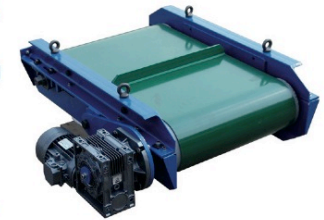
Hinged Strip

Mounted above flat belt conveyors to remove ferrous contamination from many product types.



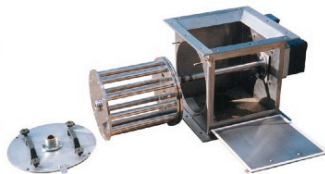
Overband

Installed above flat or trough conveyors for removal of tramp in recycling, quarrying and heavy industries. Particularly suitable for heavily contaminated products. Removed contamination is continually deposited in a collection bin.



Rota Grid

Mainly used to extract contamination from product that is prone to caking or bridging (starches, powders with high moisture content) but can be used to provide improved separation on other products. Housings available for chutes and pipelines.



Deep Field Plate

Positioned over conveyors to prevent tramp iron from entering crushers, screeners and other machinery. Deep magnetic flux fields reach into product to remove contaminants. Can be used in harsh environments.



Liquid Filter

For the removal of micron sized ferrous and para-magnetic contamination from various types of liquids. Double wall jacketed version for temperature critical applications, e.g. chocolate.

